

Space-Light-Structure: The Jewelry of Margaret De Patta

February 3 – May 13, 2012

www.museumca.org

The Story of California. The Story of You.
Oakland Museum of California

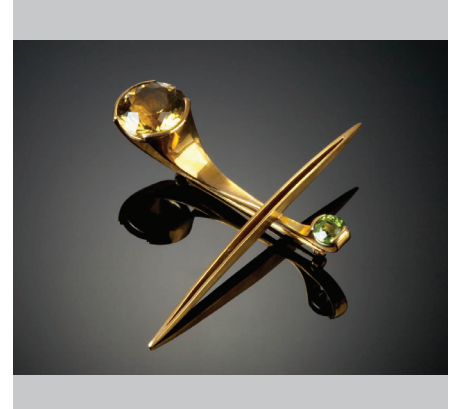
OAK
LAND
MUSEUM
OF CALIFORNIA



Margaret De Patta. (American, 1903–64). *Watch*, 1960–64. Collection of the Oakland Museum of California, Art Deaccession Fund Purchase. Photography by Lee Fatherree



Margaret De Patta. (American, 1903–64). *Pin*, 1956. Collection of the Oakland Museum of California, gift of Eugene Bielawski, The Margaret De Patta Memorial Collection. Photography by Lee Fatherree



Margaret De Patta. (American, 1903–64). *Pin*, 1960. Collection of the Oakland Museum of California, gift of Eugene Bielawski, The Margaret De Patta Memorial Collection. Photography by Lee Fatherree



Margaret De Patta. (American, 1903–64). *Ring*, 1939. Collection of the Oakland Museum of California, gift of Eugene Bielawski, The Margaret De Patta Memorial Collection. Photography by Lee Fatherree



Margaret De Patta. (American, 1903–64). *Pin*, 1941. Collection of the Oakland Museum of California, gift of Eugene Bielawski, The Margaret De Patta Memorial Collection. Photography by Lee Fatherree



Margaret De Patta. (American, 1903–64). *Bracelet*, c.1930–35. Collection of the Oakland Museum of California, gift of Eugene Bielawski, The Margaret De Patta Memorial Collection. Photography by Lee Fatherree



Margaret De Patta. (American, 1903–64). *Production Pin #4*, designed 1944; in production 1946–57. Collection of the Oakland Museum of California, gift of Eugene Bielawski, The Margaret De Patta Memorial Collection. Photography by Lee Fatherree



Margaret De Patta. (American, 1903–64). *Ring*, 1947. Collection of the Oakland Museum of California, gift of Eugene Bielawski, The Margaret De Patta Memorial Collection. Photography by Lee Fatherree



Margaret De Patta. (American, 1903–64). *Pendant*, 1950. Collection of the Oakland Museum of California, gift of Eugene Bielawski, The Margaret De Patta Memorial Collection. Photography by Lee Fatherree

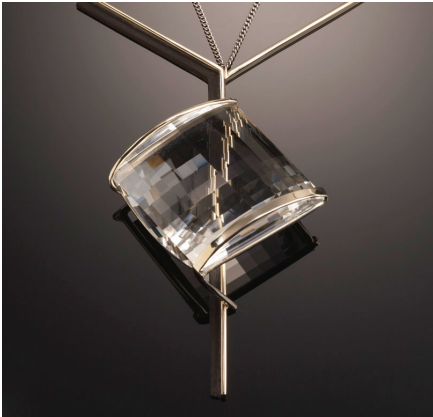
Space-Light-Structure: The Jewelry of Margaret De Patta

February 3 – May 13, 2012

www.museumca.org

The Story of California. The Story of You.
Oakland Museum of California

OAKLAND
MUSEUM
OF CALIFORNIA



Margaret De Patta. (American, 1903–64). *Pendant*, 1959. Collection of the Oakland Museum of California, gift of Eugene Bielawski, The Margaret De Patta Memorial Collection. Photography by Lee Fatherree



Margaret De Patta in San Francisco studio. 1948. Margaret De Patta archives, Bielawski Trust, Port Richmond, California. Photography George Strauss



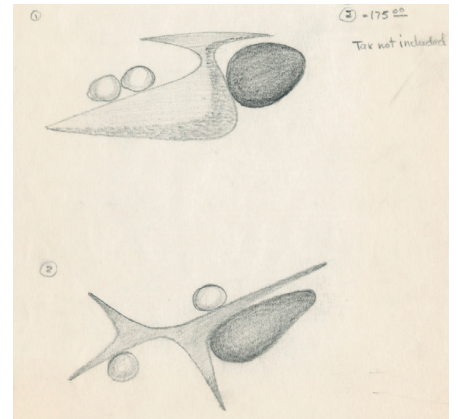
Margaret De Patta working on brooch in her San Francisco studio. 1941. Margaret De Patta archives, Bielawski Trust, Port Richmond, California. Photography Romeo Rolette



Margaret De Patta in studio. c.1954. Margaret De Patta archives, Bielawski Trust, Port Richmond, California. Photography George Bratt



Margaret De Patta in front of her Laidley Street house in San Francisco. c.1941. Margaret De Patta archives, Bielawski Trust, Port Richmond, California. Photography Romeo Rolette



Margaret De Patta. Design for Mrs. Mutter. c. 1954-60. Margaret De Patta archives, Bielawski Trust, Port Richmond, California